

# SDH Family

## E1/T1/E3/Datacom/Ethernet SDH Add/Drop Multiplexer

### SDH01A/T



The SDH01A/T, STM-1 Based Multi-Service Provisioning Platform, is an advanced compact Add Drop Multiplexer which can transmit up to 63 E1 and/or data service such as V.35 and Ethernet via an SMT-1 ring. The optical interface complies with international telecommunication standards, such as ITU-T G.655, G.652, and G.653. By utilizing a modular design for aggregate and low speed tributaries, the SDH01A/T can meet your network demands with a flexible combination of services at a lower cost. All of the pluggable modules are designed to be hot swapped without any interruption to traffic when plugging in or out. In addition to the E1 tributaries, other data interfaces are also provided for data communications such as V.35 and 10/100M Ethernet. Users can select any combination of modules according to their requirements. With its full function and multi-access capability, the SDH01A/T is your best choice for optical SDH networks.

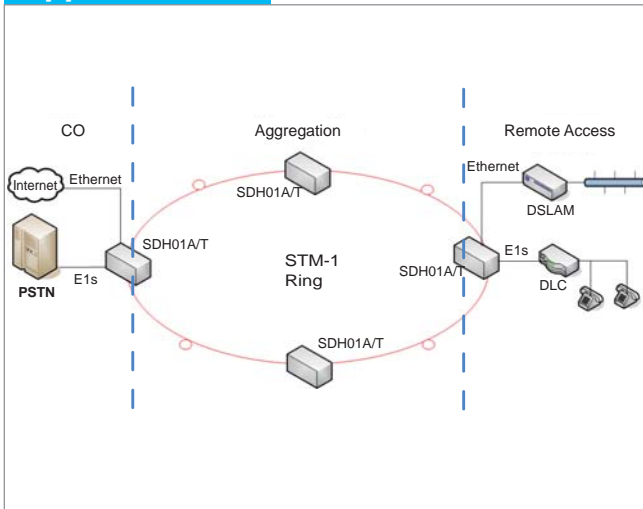
#### Features

- Stand-alone and rack-mount in 19 or 23 inch EIA rack.
- Up to 32 T1 or E1 (4, 8, 12, 16 & 32)
- Flexible ADM (add/drop multiplexer) with 63 available VC12 resources
- Up to 4 tributary cards per unit.
- Every module hot swappable
- Backup configurations in flash for system restart or power failure.
- Various services, such as E1/T1, V.35 and 10/100M Ethernet
- Ethernet traffic is encapsulated and transported over SDH using Generic Framing Procedure (GFP) & Virtual Concatenation (VCAT)
- E1 transparent transmission with HDB3 or AML line coding
- EoS (Ethernet over SDH) for E-LAN. Supports Ethernet traffic in all nodes of rings
- Single-ended network management
- 1+1 APS for optical line and module (optical redundancy)
- Three timing synchronization modes
- Alarm relays
- Alarm and performance monitoring
- Administration security with login by username and password assigned by supervisor
- Menu-driven and SNMP management interfaces
- Local and remote loop back functions for optical and E1/T1 I/Fs
- Dual power AC + DC

#### Specifications

Ports	Connector : 1x9 (SC, FC)
Optical Interface :	Data rate : 155.52Mbps (STM-1)
	Cable type : SM 9/125μm
	Distance : SM 30/60/120km, WDM 60km
Electrical Interface :	Wavelength : 1310nm, 1550nm
	Console : D-type 9-pin female
	SNMP, LAN : RJ45
	Alarm : D-type 9-pin male
	Frame Ground : Screw
Standard	STM1: ITU-T G.707, G.841, G.783, G.803, G.652
	E1: ITU-T G.703 G.704, G.706, G.732, G.823
	T1: ITU-T G.703 G.704, G.706, G.733
	Ethernet: ITU-T G.7041 GFP-F, G.707 VCAT, IEEE802.3x, 802.1p, 802.1q, 802.3ad, 802.1w, 802.1d
	V35: ITU-T V.35, ITU-T G703
LEDs	PWR, WK, FLT-fault, Alarm, ACO, RDI, LBK, Channels, Ethernet
Power	AC : 90 ~ 264V DC24 : -36 ~ -72V
Power Consumption	< 15W
Dimensions (D x W x H)mm	312 x 440 x 44mm
Weight	3.6 kg
Temperature	0~50°C (Operating) ,0~70°C (Storage)
Humidity	10~90% non-condensing
Certification	CE, FCC, RoHS
MTBF	50,000 hours

#### Application



#### Ordering Information

Master Unit	Description
SDH01A/T-CH-AD	1U 19" STM1 ADM chassis with RS-232 DB9 Console cable and AC + DC
Master Unit	Description
SDH01-4E1B	4 x E1 G.703 interface card BNC
SDH01-8E1B	8 x E1 G.703 interface card 75 ohm RJ48 with 8 x 1ch RJ48 to BNC cables
SDH01-8E1R	8 x E1 G.703 interface card 120 ohm RJ48
SDH01-4V35	4 x V35 interface card with 2 x 2ch M34 cables
SDH01-4SW	Ethernet over SDH card, 4 x 10/100 BaseTX RJ45
SDH01-ET3	E3/DS3 interface card
SDH01-8E1/T1	8xE1/T1 interface card wire wrap
Fiber Uplink Cards	Transceiver Type
SDH01-OPT-SCXX	SM :030,050,120km
SDH01-OPT-FCXX	WDM : 60A/B, km